

CENTRAL EUROPE PROGRAMME 2007-2013



CADSES Closing Conference
24 - 25 November 2008
Venice, IT

CENTRAL EUROPE Programme - Cooperating for success

Walther Stöckl
Managing Authority
CENTRAL EUROPE PROGRAMME

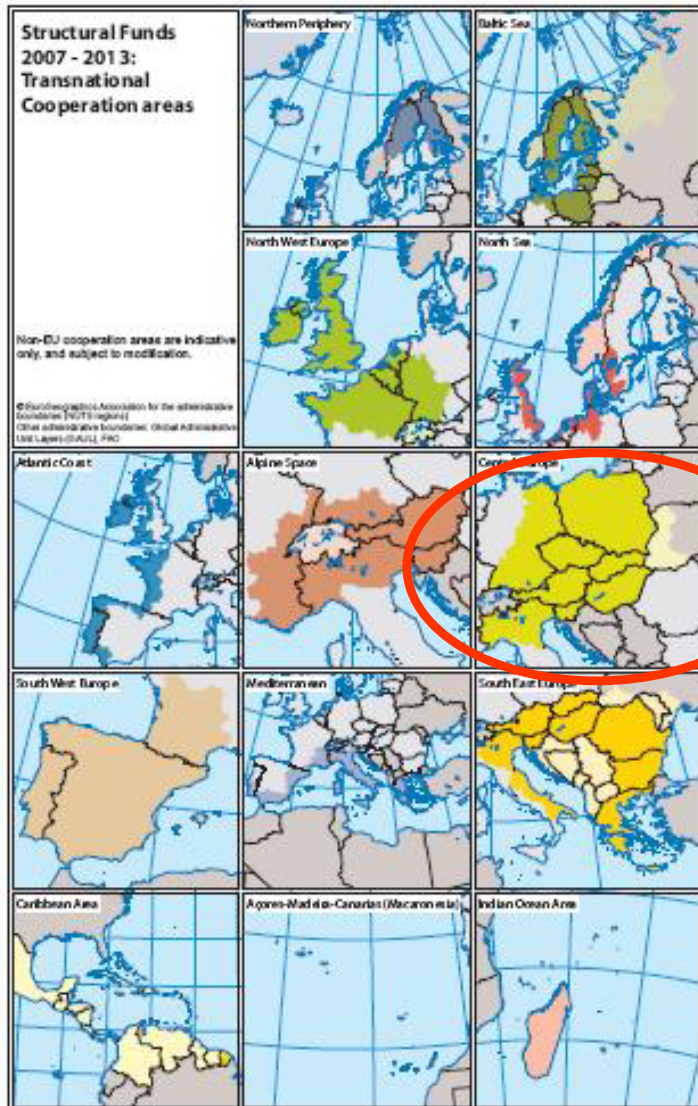
OVERVIEW



- The programme family
- European Territorial Cooperation goals
- Facts and figures
- What kind of projects we expect /
Quality characteristics
- Overview First call
- Outlook second call



THE PROGRAMME FAMILY



The EU supports 13 European Transnational Cooperation Programmes

- Northern Periphery
- Baltic Sea
- North West Europe
- North Sea
- Atlantic Coast
- Alpine Space
- **Central Europe**
- South West Europe
- Mediterranean
- South East Europe
- Caribbean Area
- Açores-Madeira-Canarias
- Indian Ocean Area

- Is supported by the EU to promote regional competitiveness, excellence and sustainability (Lisbon and Gothenburg agenda)
- Aims to reduce economic and social disparities, improves competitiveness and mobilise the growth potential of cities and regions
- Is not just about cooperation, it is about relevant, high-quality and innovative projects that promise real benefits and results

CENTRAL EUROPE Programme:

- Promotes economic, environmental and social development in Central Europe
- Makes € 231 million available to support projects involving cooperation between national, regional and local actors
- Supports joint actions in the fields of innovation, accessibility, environment and competitiveness



PROGRAMME GOALS



- Strengthening territorial cohesion
- Promoting internal integration
- Enhancing competitiveness of Central Europe



CENTRAL EUROPE PROGRAMME AREA

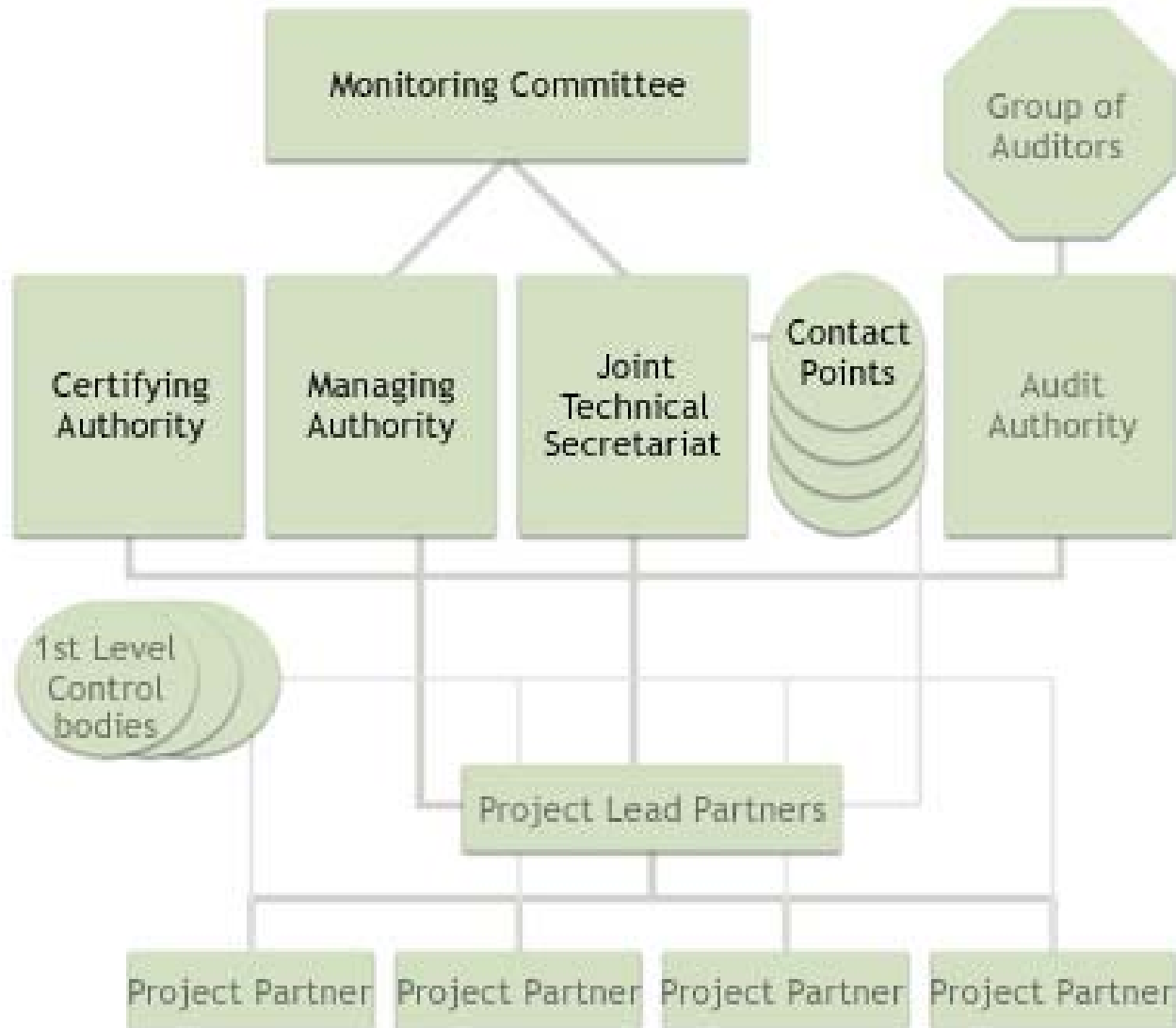


Nine
countries,
one
programme!



Cooperating
for success!

PROGRAMME MANAGEMENT



- P1 - Facilitating innovation across Central Europe
- P2 - Improving accessibility of, and within, Central Europe
- P3 - Using our environment responsibly
- P4 - Enhancing competitiveness and attractiveness of cities and regions



Aims:

- Improve climate for innovation in all regions
- Make better use of innovation potentials
- Build up favourable framework conditions
- Build up capabilities for the effective transfer and application of innovation
- Foster knowledge development

Aims:

- Improving accessibility - a precondition for economic development
- Reducing disparities in programme area
- Promote information and communication technology based solutions as well as non technology based solutions for enhancing access
- Foster interconnectivity and intermodality for higher efficiency of transport

P3: USING OUR ENVIRONMENT RESPONSIBLY



Aims:

- More and responsible use and better preservation of environment
- Manage and protect natural resources
- Support the use of environmentally friendly technologies
- Reduce the risk of natural and man made hazards
- Support use of renewable energy and increase energy efficiency

Aims:

- Improve the quality of life in cities and regions
- Promote polycentric development and territorial cooperation
- Address effects of demographic and social change
- Provision and management of cultural resources



PRIORITIES & FINANCIAL ALLOCATION



ERDF budget	National contribution	Total budget	Co-financing rate
231 Mio. EUR	52 Mio. EUR	283 Mio. EUR	75% - 85%

Priorities	ERDF
P1 - FACILITATING INNOVATION ACROSS CENTRAL EUROPE	49 Mio. EUR
P2 - IMPROVING ACCESSIBILITY TO, AND WITHIN, CENTRAL EUROPE	64 Mio. EUR
P3 - USING OUR ENVIRONMENT RESPONSIBLY	64 Mio. EUR
P4 - ENHANCING COMPETITIVENESS AND ATTRACTIVENESS OF CITIES AND REGIONS	54 Mio. EUR



EXPECTED PROJECTS: Size and duration



Indicative project size

- 1-5 million EUR of total budget
- In exceptional cases also smaller or larger projects can be funded

Indicative project duration

- Between 30 - 36 months
- Maximum 48 months



Key words

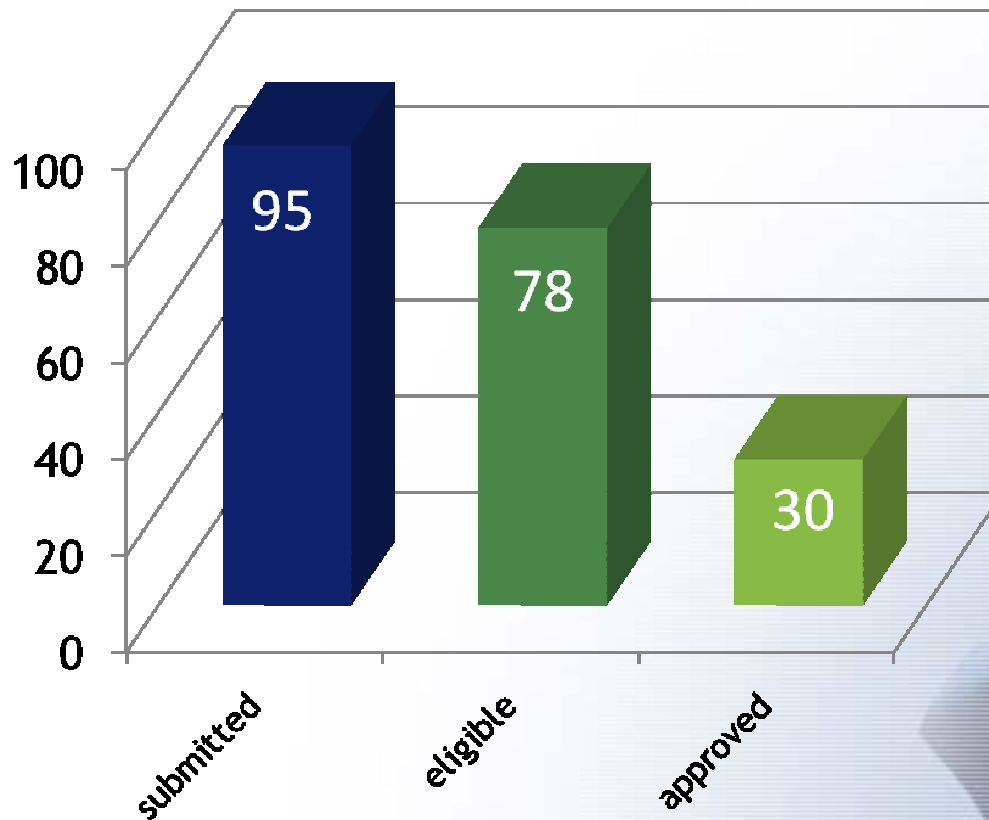
- Innovation
- Relevance
- Added value
- Quality
- Result orientation



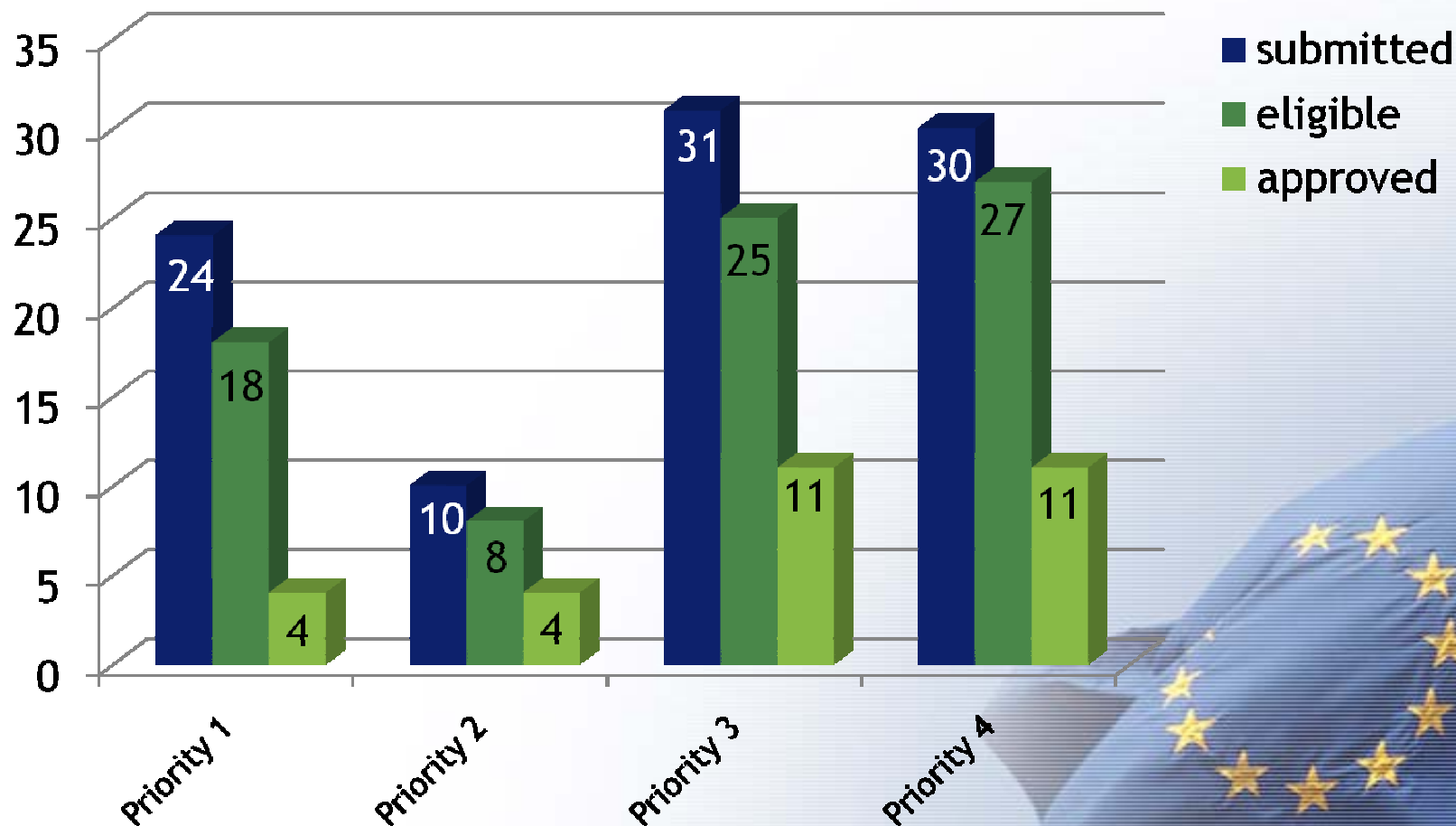
- Transnational thematic focus and partnership
- Clear added value
- Effective knowledge creation and transfer
- Coherent approach and effective management
- Concrete and visible outputs and results with a focus on actual implementation



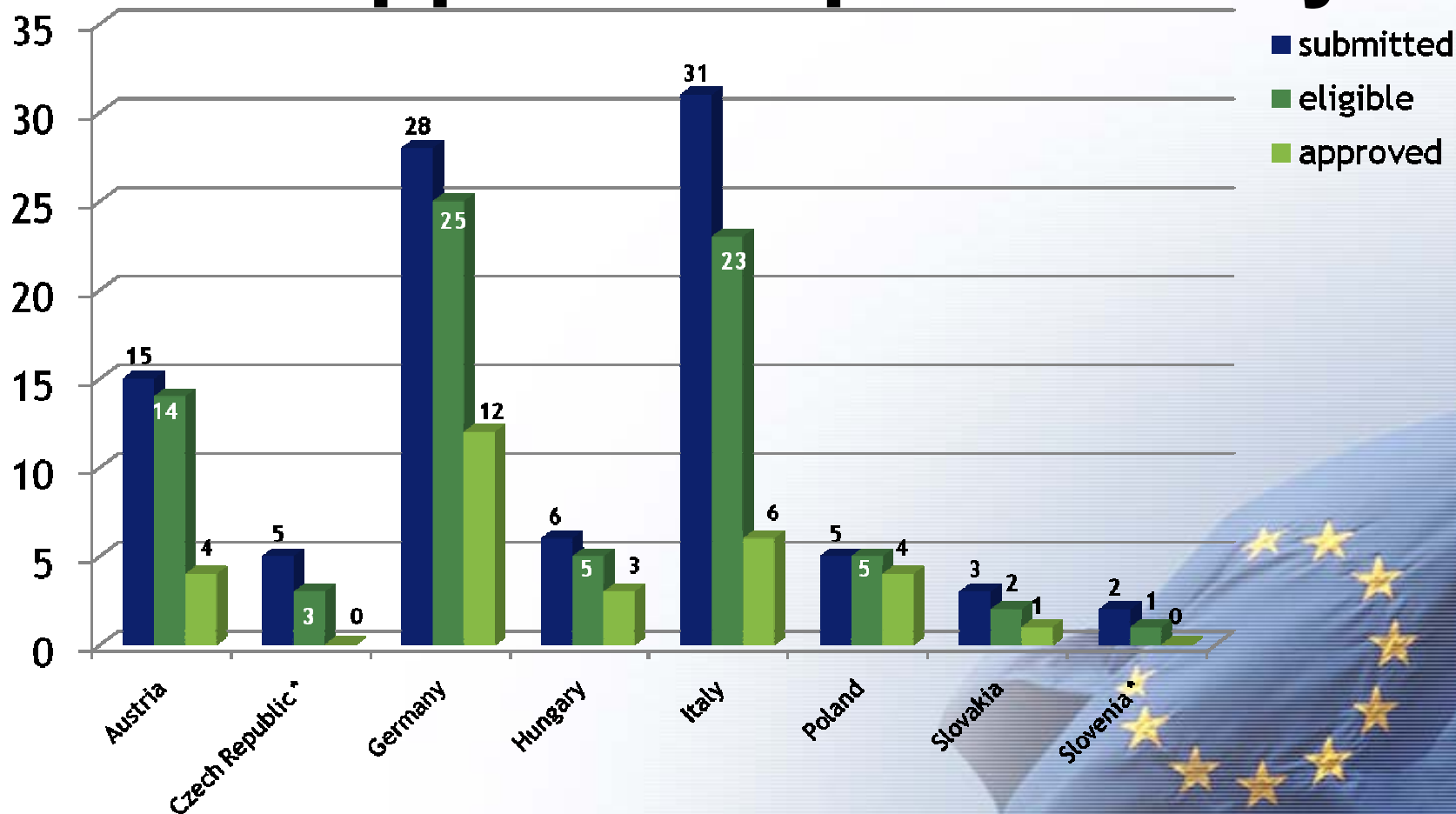
Project proposals 1st call



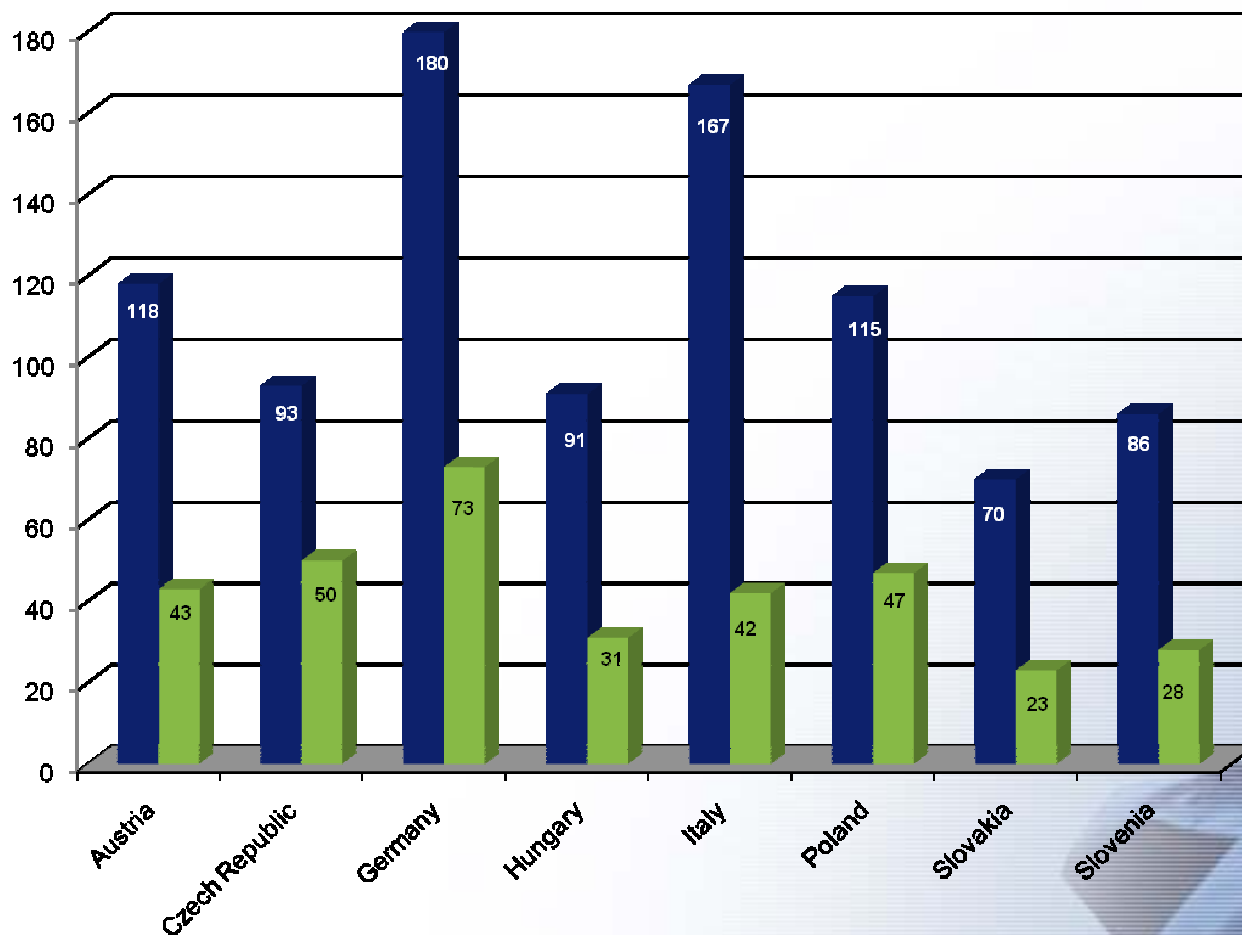
Project proposals per priority



Lead applicants per country



Results of the 1st call



Project partners per country

■ submitted
■ approved



Outlook to the 2nd call



- Open for all priorities
- ERDF budget around 70 Mio. €
- Indicative launch of the 2nd call: 7 January 2009
- Indicative closure of the 2nd call: 18 March 2009
- Partner Search Forum : 16-17 December in Poznan (PL)

- Private institutions as Lead Partners - Priority 1 only
 - Partners from EU regions outside CENTRAL EUROPE - up to 20% of requested ERDF



Programme website: www.central2013.eu

- Thematically structured in line with four programme priorities
- Clear navigation
- Thematic News section
- Calendar of thematic and programme events
- People/Member section with networking functions: More than 1200 registered users
- Project Idea Database
- Links to tools & resources



The screenshot shows the homepage of the CENTRAL EUROPE website. At the top, there is a navigation menu with links for HOME, ABOUT, FAQ, LINKS, CONTACT, and JOBS. The main header features the CENTRAL EUROPE logo and a description: "A EUROPEAN TERRITORIAL COOPERATION PROGRAMME (2007-2013) PROMOTING ECONOMIC, ENVIRONMENTAL AND SOCIAL DEVELOPMENT IN CENTRAL EUROPE". Below this is a search bar and a "SUBMIT" button. The page is divided into several sections: "CENTRAL EUROPE SUPPORTS" with four priority areas: INNOVATION, ACCESSIBILITY, ENVIRONMENT, and COMPETITIVENESS; "WORKING WITH CENTRAL" with sub-sections for Programme Area, How to apply, How to implement, Document Centre, and Tools and methods; "CENTRAL PROJECTS" with a "POST YOUR PROJECT IDEA" button and a list of project ideas (Innovation, Accessibility, Environment, Competitiveness); "CENTRAL PEOPLE" with a "MEET THEM" section for finding project partners and profiles; and "EVENT CALENDAR" with a list of upcoming events from September 16 to 19, 2007. A "Become a MEMBER" section is also present with a login form. The footer contains links for SITEMAP, GLOSSARY, DISCLAIMER, and INTRANET.

- Geographically spread Lead Applicant Briefings for every call
- Partner Search Forums
- Individual guidance to project applicants
- Thematic seminars
- Telephone + email inquiries
- National hotlines for general programme info and early-stage project guidance (Contact Points)



Thank you for your attention!



EUROPEAN UNION
EUROPEAN REGIONAL
DEVELOPMENT FUND

