



ILUP

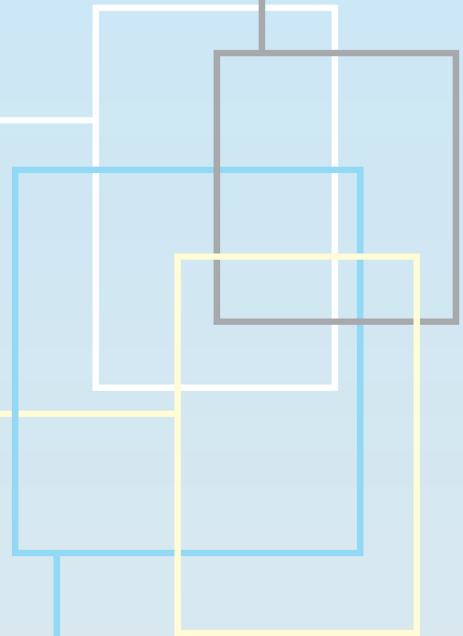
Integrated Land Use Planning and
River Basin Management



INTERREG III B CAUSES



INVITATION



Final Meeting
December 5th — 7th 2006
Waidhofen/Ybbs
Austria

Project part-financed by the European Union

ILUP

Integrated Land Use Planning and River Basin Management

Rivers need Space

Intensive agriculture, settlement and traffic and increasing human activities have affected very much the way of water from precipitation to flume. The same is valid for the plain surfaces of river valleys, which are utilised intensively and thus compete directly with the space requirements of rivers and streams to discharge floods safely and to sustain a speciesrich river- and alluvial forest-ecosystem.

Utilisation claims for the river basin are raised also from agriculture, recreation and leisure time, nature conservation etc.

The floods and damages of the last years showed, that sustainable flood protection can be achieved only by a combination of land management in the catchment area, provision of additional space for flood prevention and technological solutions.

From sectoral water management to integrated river basin management

The fundamental idea of the ILUP-approach is a thematic and transnational cross-linking of the assessment of the natural environment from strategy development to measure implementation.

Taking as example several test areas in Bavaria, Czech Republic, Hungary and Austria, a strategy for the handling of specific natural hazards of this landscape type is developed for the hill country and the foothills.

Many factors are crucial for the appearance of harmful floods. Only a small part of them is depending on the flume; therefore an integrated management of water re-sources, of natural hazards, of nature space and of utilisation interests at the whole catchment area is indispensable.

This requires an intensive collaboration of actors (Water management, torrent and avalanche control, forest, agriculture, hunt, spatial planning, nature conservation, tourism, etc.), the preparation of a data basis and the reconciliation of the proceeding strategies that shall be elaborated commonly.

Registration at the latest 30.11.2006

Name:

Institution:

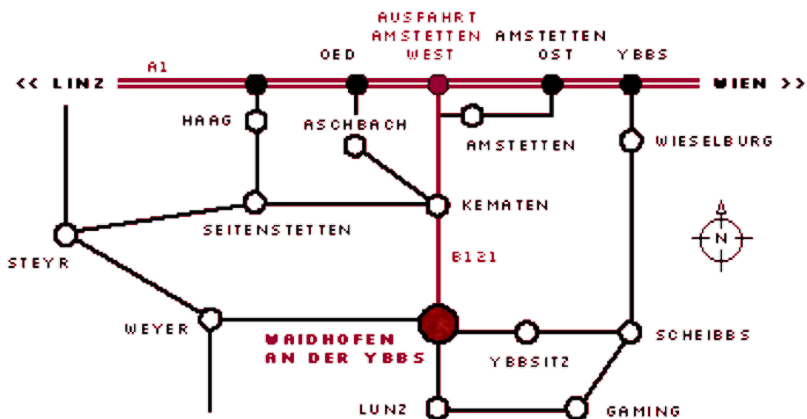
e-Mail:

Meeting 5.12.2006

Meeting 6.12.2006

Excursion 7.12.2006

Registration per e-Mail at:
wolfgang.kusche@schabl.at



Participation at the event is for free

Venue and Accommodation:
 Schlosshotel Waidhofen/Ybbs
 Am Schlossplatz 1
 A—3340 Waidhofen/Ybbs
 Phone: +43 (0) 7442/505

Please, book the room by yourself

Contact:
 Hr. Wolfgang Kusché, Schabl & Partner OEG
 wolfgang.kusche@schabl.at, Tel.: +43 (0)1 503 75 90 2

Organizer:
 Bundesministerium für Land- und Forstwirtschaft, Umwelt und
 Wasserwirtschaft



Agenda

Tuesday, December 5th 2006
 Venue: Schlosshotel

Working language: German, translation Czech and Hungarian

- | | |
|-------------|---|
| 17.00—17.10 | Salutation
Mag. W. Maier, Bgm. Waidhofen/Ybbs |
| 17.10—17.30 | Land development— Intelligent answers for land use
LR DI J. Plank, NÖ Landesregierung |
| 17.30—18.00 | Living environment river
SC DI W. Schimon, Lebensministerium
Sektion Wasser |
| 18.00—18.15 | Current perspective out of the business area “natural hazards”
SC DI G. Mannsberger, Lebensministerium
Sektion Forst |
| 18.15—18.30 | Challenge in rural area: Development of cultivated land in mountainous region
Doz. Dr. K. Buchgraber, HBLFA Raumberg—Gumpenstein |
| 18.30—18.45 | Requirements of the region on the river basin management
Mag. J. Heuras, Bgm. St.Peter an der Au |
| 18.45—19.00 | Presentation of the project ILUP
MR DI H. Siegel, Lebensministerium |
| 19.00—19.10 | Presentation working agenda 6.12.2006
DI A. Schabl, Project coordinator |
| 20.00 | Presentation of the posters and buffet |

Agenda

Wednesday, December 6th 2006

Venue: Schlosshotel

Working language: German, translation Czech and Hungarian

09.00—09.20	River Basin Management Rába/Hungary
09.20—10.15	Erosion Control: Catchment area Ybbs & Pomoravi
10.15—10.30	Development of the water body Ybbs
10.30—10.45	Flood water risk management
10.45—11.00	Scenery of agrarian cultivation
11.00—11.30	Coffee Break
11.30—12.00	Man und landscape — Pomoraví
12.00—12.30	Man and water body—River pedagogy Ybbs
12.30—14.00	LUNCH
14.00—15.30	River Basin Management (Bavaria) Part 1: From the waters into the catchment - setting the scene Part 2: Water and its interdisciplinary context Part 3: Process management - From planning towards implementation
15.30—16.00	Coffee Break
16.00—16.30	River Basin Management— Common approach Leadpartner MR DI H. Siegel, Lebensministerium
16.30—17.00	Discussion
17.00—17.30	New Perspective for the Leader+ Program Ing. Mag. A. Grieshofer, Lebensministerium
17.30—18.00	Summery and view "ILUP II" DI A. Schabl, Project coordinator
19.30	Presentation of the posters and buffet

Agenda

Thursday, December 7th 2006

Excursions

9.00	Departure Schlosshotel
9.30—10.30	Excursion 1: Sonntagberg: Catchment area of the river Ybbs — Over view Überblick
10.30—11.30	Excursion 2: Seitenstetten: planed flood retention basin— Presentation
11.30—13.00	Excursion 3: Visitation of the Monastery Seitenstetten
13.00—14.30	LUNCH
14.30—15.00	Summary MR DI H. Siegel, Lebensministerium
15.00— 15.30	Return to Waidhofen (Schlosshotel)
15.30	Closing of event